

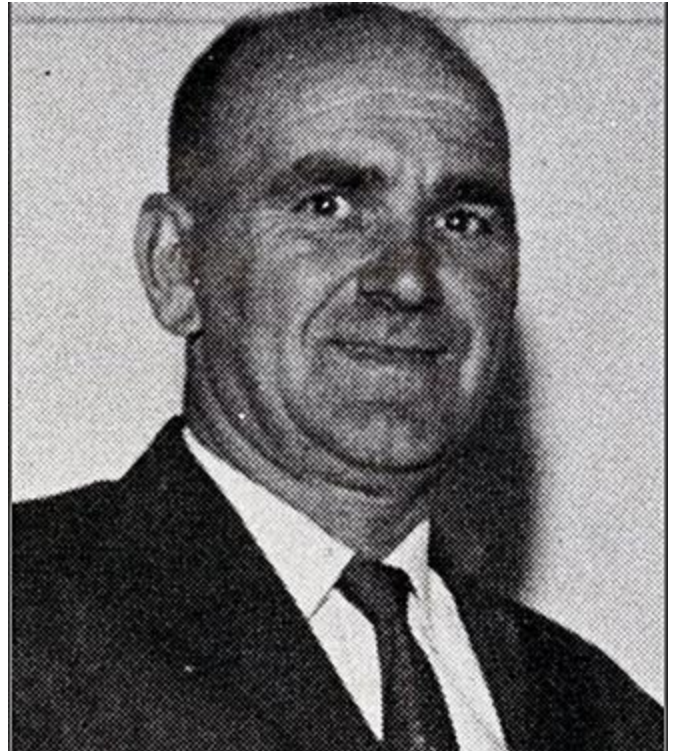


WYATT DOWLING / WAWANESA INSURANCE WALLS OF FAME

Albert Edward (Ed) Golding **- Inducted in 2013**

Born in Brandon, Manitoba Ed came to Transcona in the early 1930s. He worked at the CN Shops, the East End CC, and lastly the City of Winnipeg as manager of Roland Michener Arena.

Ed Golding has been credited as the motivating force behind the formation of the East End Community Club. From the first club house of a railway box car, Ed believed that the club would provide a diversion and healthy recreation for the children and young folks. It is said that he ripped the siding off of his own home to better insulate the railway car first used as the club. He served as the president of the East End Community for 20 years. His motto was "If it is good for the kids, then the East End will back it". He was praised by fellow community members for being a great leader and supplying a limitless fund of spirit, determination, enthusiasm, courage, and vision. It was said that "Ed had a heart of gold when it came to the kids... He had his heart and soul in the community club."



Credit: Transcona Museum Archives

Ed passed away in 1978. In the fall of 1994, Ed Golding Memorial Arena was designated. He is also the namesake of Ed Golding Bay.